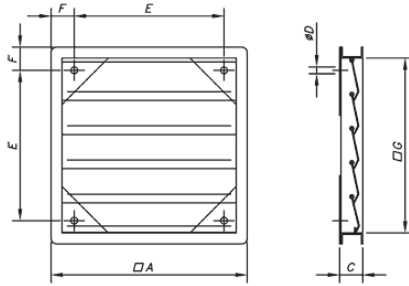


**P**

**Overpressure blinds made of aluminium**

Characteristics:

- The overpressure blind is fitted directly over the wall where the fan is installed.
- Aperture by overpressure due to air flow.
- Closed when the fan is at rest.
- Made of aluminium sheet metal except for models 125 and 140, which are made of galvanised sheet steel.
- Maximum speed recommended 18m/sec. for 90, 100, 125 and 140 models.



Model	Measurements					
	G	A	C	ØD	E	F
P 25	240	290	51	6	180	55
P 35	350	400	51	6	290	55
P 45	450	500	51	6	390	55
P 56	550	600	51	6	440	80
P 63	645	715	72	6	555	80
P 71	710	780	72	6	620	80
P 80	805	875	72	6	695	90
P 90	900	970	72	6	790	90
P 100	1000	1070	72	6	890	90