

CJMD

400°C/2h and 300°C/2h extraction units with linear inlet and outlet



The sides on large models are built with pleats to ensure robustness

Extraction units to work inside fire danger zones at 400°C/2h, with soundproofed box.

Fan:

- Galvanised sheet steel structure with thermal insulation and soundproofing.
- Impeller with backward-curved blades and multi-blade impeller made from sheet steel
- Approval according to Standard EN 12101-3:2002/AC:2006, with certification No: 0370-CPR-0399
- Linear air circulation

Motor:

- Class H motors, ongoing use S1 and emergency use S2, with ball bearings and IP55 protection
- Three-phase 230/400V.-50Hz. (up to 4HP) and 400/690V.-50Hz. (power over 4HP)
- Max. air temperature to transport: S1 Service -20°C+ 40°C for ongoing use, S2 Service 300°C/2h and 400°C/2h

Finish:

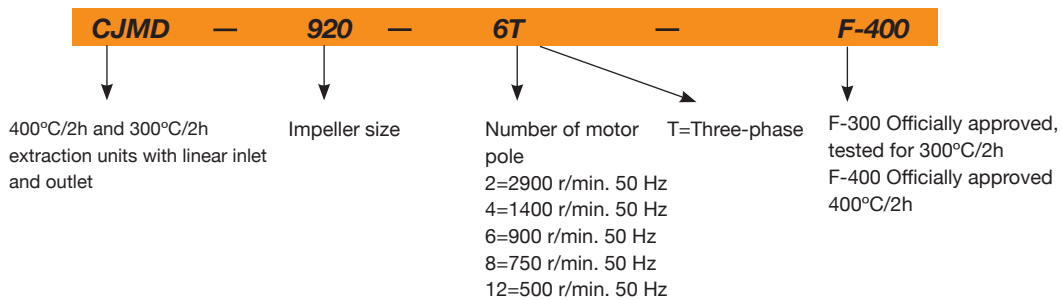
- Anti-corrosive galvanised sheet steel.

On request:

- Fans with two-speed motor.



Order code



Technical characteristics

Model	Speed (r/min)	Maximum admissible current (A)			Power installed (kW)	Airflow maximum (m³/h)	Sound pressure level dB(A)	Approx. weight (Kg)
		230V	400V	690V				
CJMD-600-4T	1430	3.80	2.20		0.75	2445	58	68
CJMD-665-4T	1420	4.70	2.70		1.10	3385	62	80
CJMD-730-4T	1435	9.20	5.30		2.20	5005	66	100
CJMD-730-6T	940	4.40	2.60		0.75	3300	52	95
CJMD-800-4T	1440		8.40	4.85	4.00	6850	69	132
CJMD-800-6T	945	7.40	4.30		1.50	5115	56	116
CJMD-825-6T	950	10.30	5.90		2.20	6400	60	146
CJMD-885-6T	950	10.30	5.90		2.20	8105	63	164
CJMD-905-4T	1430	3.80	2.20		0.75	5800	63	133
CJMD-920-6T	950	10.30	5.90		2.20	7500	69	184
CJMD-960-4T	1420	4.70	2.70		1.10	8030	64	185
CJMD-1020-4T	1425	6.60	3.80		1.50	10500	66	198
CJMD-1020-6T	940	4.40	2.60		0.75	7410	56	197
CJMD-1160-6T	970		11.00	6.35	4.00	11000	71	263
CJMD-1225-4T	1430	11.40	6.60		3.00	15150	71	279
CJMD-1225-6T	945	6.40	3.70		1.10	10050	62	274
CJMD-1330-4T	1430		11.50	6.64	5.50	24450	72	409
CJMD-1330-6T	945	7.40	4.30		1.50	16100	63	370
CJMD-1550-4T	1455		23.00	13.28	11.00	34610	77	553
CJMD-1550-6T	945	15.00	8.70		3.00	22750	68	501



Erp. BEP (best efficiency point) characteristics

<(°)	Angle of inclination of the blades, in degrees	SR	Specific ratio
PN	Motor's nominal power in kW	ηe[%]	Efficiency
MC	Measurement category	N	Efficiency grade
EC	Efficiency category	[kW]	Input power
S	Static	[m³/h]	Airflow
T	Total	[mmH²O]	Static or total pressure (According to EC)
VSD	Variable-speed drive	[RPM]	Speed

Modelo	MC	EC	VSD	SR	ηe[%]	N	(kW)	(m³/h)	(mmH₂O)	(RPM)
CJMD-600-4T	A	S	NO	1.00	34.3%	43.7	0.326	1187	34.59	1479
CJMD-665-4T	A	S	NO	1.01	35.5%	43.5	0.553	1501	48.06	1470
CJMD-730-4T	A	S	NO	1.01	37.4%	43.5	1.086	2303	64.68	1475
CJMD-730-6T	A	S	NO	1.00	33.1%	42.1	0.386	1622	28.94	980
CJMD-800-4T	A	S	NO	1.01	39.0%	43.8	1.750	3120	80.29	1479
CJMD-800-6T	A	S	NO	1.00	35.5%	43.1	0.624	2332	34.85	983
CJMD-825-6T	A	S	NO	1.01	37.2%	43.6	0.964	3441	38.22	983
CJMD-885-6T	A	S	NO	1.01	41.1%	46.5	1.388	3946	53.00	976
CJMD-905-4T	A	S	NO	1.00	45.7%	58.5	0.608	2924	34.89	1461
CJMD-920-6T	A	S	NO	1.01	44.2%	48.3	2.202	5546	64.33	962
CJMD-960-4T	A	S	NO	1.01	50.2%	60.4	1.065	3883	50.49	1442
CJMD-1020-4T	A	S	NO	1.01	50.7%	58.7	1.759	5378	60.90	1437
CJMD-1020-6T	A	S	NO	1.00	45.5%	58.3	0.592	4109	24.02	969
CJMD-1160-6T	A	S	NO	1.01	33.3%	35.6	4.370	6929	77.00	975
CJMD-1225-4T	A	S	NO	1.01	54.3%	59.4	3.277	8342	78.29	1440
CJMD-1225-6T	A	S	NO	1.00	48.4%	58.7	1.054	5632	33.24	963
CJMD-1330-4T	B	T	NO	1.01	70.5%	72.4	6.537	13932	121.38	1432
CJMD-1330-6T	A	S	NO	1.00	56.7%	64.2	1.930	9620	41.77	948
CJMD-1550-4T	B	T	NO	1.01	69.9%	69.6	13.078	22380	149.81	1455
CJMD-1550-6T	B	T	NO	1.01	57.4%	61.5	4.069	15016	57.11	945

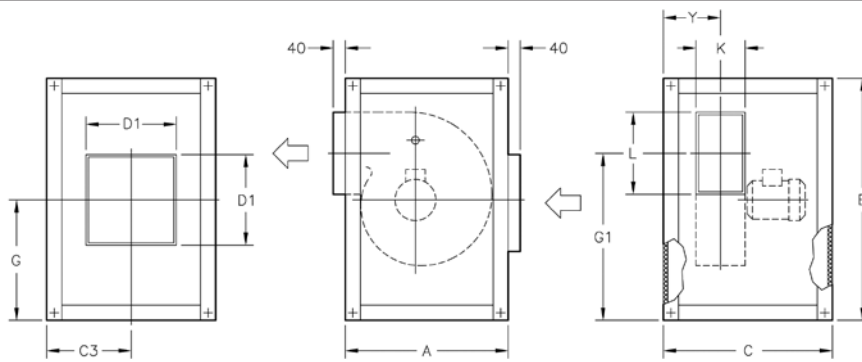
Acoustic features

The specified values are determined according to free field measurements of pressure and sound levels in dB(A) at an equivalent distance of twice the fan's span plus the turbine's diameter, with a minimum of 1.5 m.

Sound power Lw(A) spectrum in dB(A) via frequency band in Hz.

	63	125	250	500	1000	2000	4000	8000		63	125	250	500	1000	2000	4000	8000
600-4	33	43	54	61	65	62	60	53	960-4	51	64	70	75	72	75	70	56
665-4	37	47	58	65	69	66	64	57	1020-4	56	66	74	76	75	77	68	58
730-4	41	51	62	69	73	70	68	61	1020-6	45	57	64	69	65	61	54	46
730-6	27	37	48	55	59	56	54	47	1160-6	50	60	71	78	82	80	78	70
800-4	47	56	67	74	78	76	74	67	1225-4	61	70	83	79	82	83	77	63
800-6	34	43	54	61	65	63	61	54	1225-6	53	61	73	75	72	73	63	52
825-6	38	47	58	65	69	67	65	58	1330-4	72	77	83	85	83	80	73	65
885-6	41	50	61	68	72	70	68	61	1330-6	61	62	74	74	73	75	65	55
905-4	48	62	68	71	71	72	62	51	1550-4	75	76	85	88	90	91	87	74
920-6	48	58	69	76	80	78	76	68	1550-6	65	65	79	78	82	82	71	60

Dimensions in mm

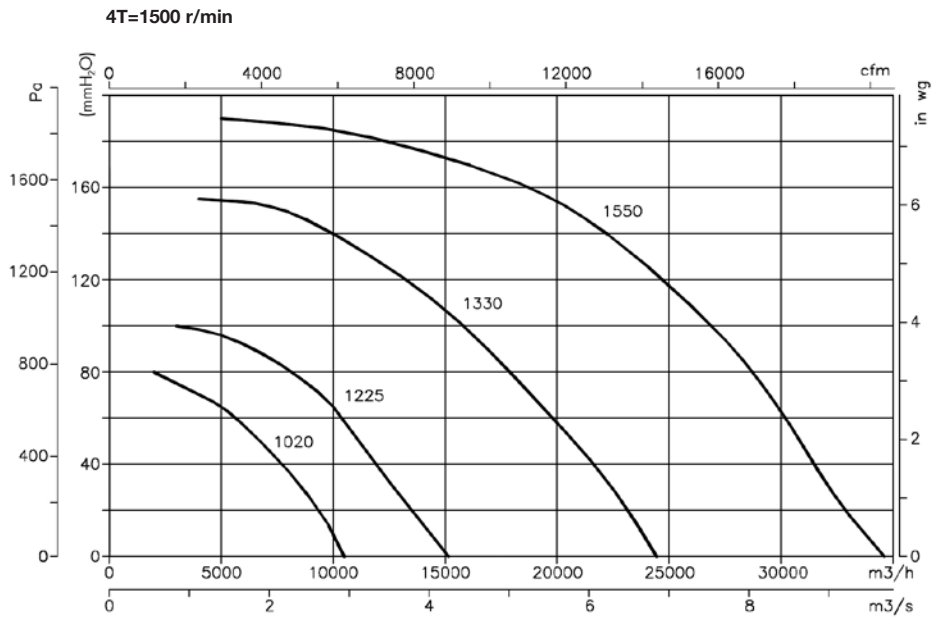
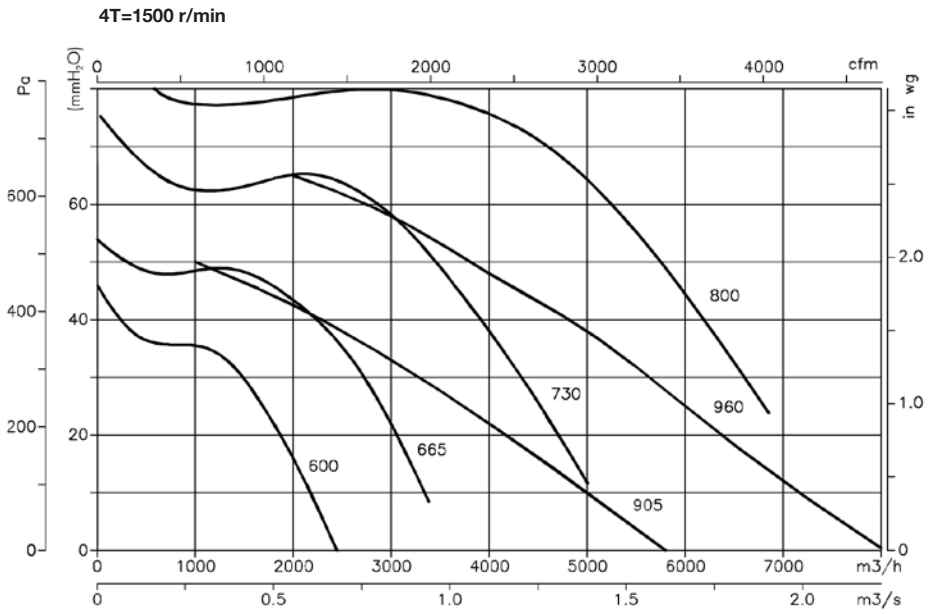


	A	B	C	C3	D1	G	G1	K	L	Y		A	B	C	C3	D1	G	G1	K	L	Y
CJMD-600-4T	735	755	604	302	400	378	500	140	215	190	CJMD-960-4T	1060	1080	966	483	600	540	694	355	450	443
CJMD-665-4T	790	810	678	339	400	405	540	165	250	215	CJMD-1020-4T	1150	1170	1038	519	800	585	756	400	500	490
CJMD-730-4T	855	874	748	374	400	437	577	180	295	237	CJMD-1020-6T	1150	1170	1038	519	800	585	756	400	500	490
CJMD-730-6T	855	874	748	374	400	437	577	180	295	237	CJMD-1160-6T	1375	1395	1098	549	800	698	999	315	450	414
CJMD-800-4T	941	961	798	399	500	481	653	200	320	264	CJMD-1225-4T	1204	1284	1258	629	800	642	836	450	560	545
CJMD-800-6T	941	961	798	399	500	481	653	200	320	264	CJMD-1225-6T	1204	1284	1258	629	800	642	836	450	560	545
CJMD-825-6T	1039	1059	892	446	500	530	770	230	280	296	CJMD-1330-4T	1338	1418	1474	737	800	709	921	500	630	620
CJMD-885-6T	1148	1168	938	469	500	585	849	250	320	330	CJMD-1330-6T	1338	1418	1474	737	800	709	921	500	630	620
CJMD-905-4T	970	990	896	448	500	495	636	315	400	398	CJMD-1550-4T	1495	1575	1648	824	1000	788	1032	560	710	675
CJMD-920-6T	1268	1287	954	477	600	644	945	284	360	372	CJMD-1550-6T	1495	1575	1648	824	1000	788	1032	560	710	675

Characteristic curves

Q = Airflow in m³/h, m³/s and cfm.

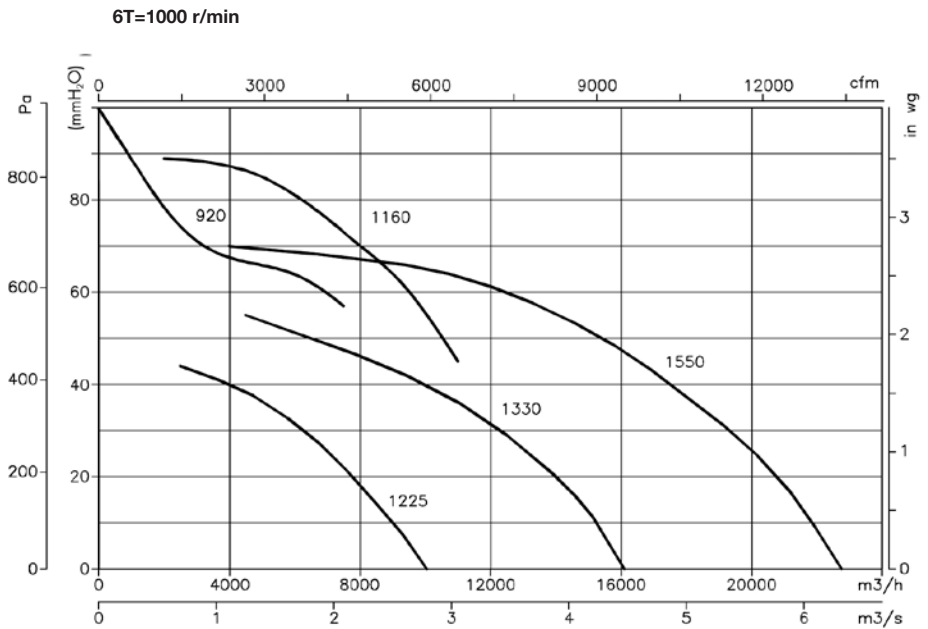
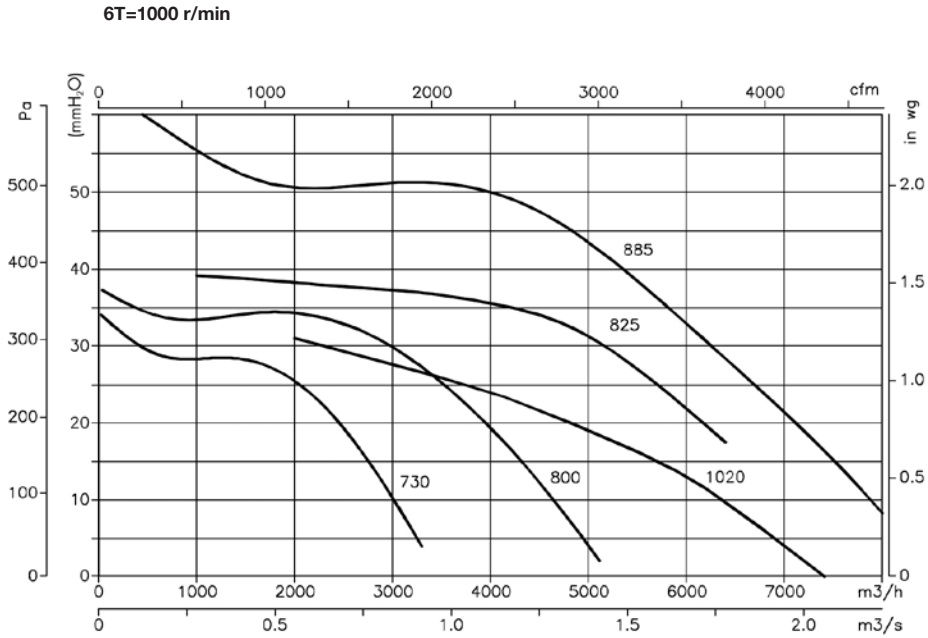
Pe= Static pressure in mmH₂O, Pa and inwg.



Characteristic curves

Q = Airflow in m³/h, m³/s and cfm.

Pe= Static pressure in mmH₂O, Pa and inwg.



Accessories

See accessories section

