

Verso R 1500 U/H/V

Nominal air flow according to ErP 2018, m ³ /h	1530
Panel thickness, mm	50
Unit weight, kg	206
Supply voltage HE, V	3~400
Supply voltage HW, V	1~230
Maximal operating current HE, A	12,9
Maximal operating current HW, A	6,7
Filters dimensions BxHxL, mm	800x400x46
Electric power input of the fan drive at maximum flow rate, W	450
Electric air heater capacity, kW / Δt, °C	4,5 / 6,9
Control panel	C5.1
Maintenance space, mm	800



C5.1

Acoustic data

A-weighted sound power level L_{WA} , dB(A) at nominal flow rate

Supply inlet	60
Supply outlet	75
Exhaust inlet	60
Exhaust outlet	71
Casing	54

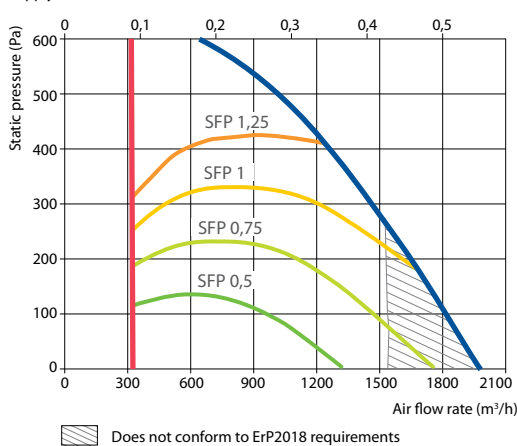
A-weighted sound pressure level L_{PA} , dB(A)

10 m² normally isolated room, distance from casing – 3 m.

Surroundings	44
--------------	----

Performance (Verso R 1500 UH data)

Supply air filter F7, exhaust air filter M5



Temperature efficiency

Outside temperature, °C	Winter					Summer		
	-23	-15	-10	-5	0	25	30	35
After heat exchanger, °C	12,3	14,0	15,1	16,2	17,2	22,6	23,7	24,8

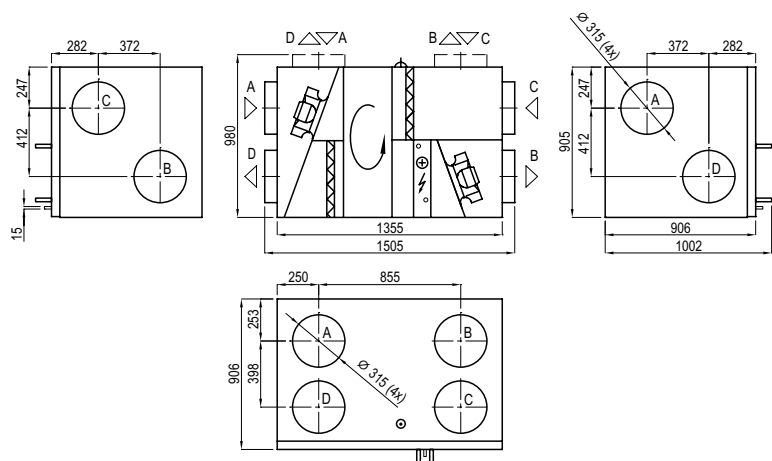
indoor +22°C, 20% RH

Changeover water/ DX heating – cooling exchanger (HCW/HCDX)

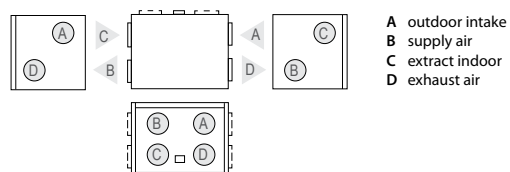
	Winter		Summer	
	Water temperature in/out, °C	Condensation/evaporation T, °C	Capacity, kW	Maximal capacity, kW
Water temperature in/out, °C	60/40	7/12	–	–
Condensation/evaporation T, °C	–	–	45	45/5
Capacity, kW	5,0	9,1	5,3	10,4
Maximal capacity, kW	10,9	9,7	8,2	12,6
Pressure drop, kPa	1,7	11,8	–	–
Air temperature in/out, °C	12,3 / 22	30 / 18,1	12,3 / 22	30 / 18
Connection, " / mm	¾		½ / 22	

Summer: +30°C/ 50%; DX – 1500 m³/h

Shown as right (R1)



Shown as left (L1)



Accessories (p. 123)

Closing damper	AGUJ-M-315+LF24/LM24
Silencer	A/D AGS-315-100-900-M
	B/C AGS-315-100-1200-M
PPU	PPU-HW-3R-15-1,6-W2
Water cooler	DCW-1,4-9
2-way valve	VVP47.20-4,0+SSP61
DX cooler	DCF-1,4-10
Cooling unit	MOU 36HFN8+KA8243