

Verso CF 1700 U/H/V

Nominal air flow according to ErP 2018, m ³ /h	1515
Panel thickness, mm	50
Unit weight, kg	243
Supply voltage HE, V	3~400
Supply voltage HW, V	1~230
Maximal operating current HE, A	12,9
Maximal operating current HW, A	6,7
Filters dimensions BxHxL, mm	800x400x46
Electric power input of the fan drive at maximum flow rate, W	465
Electric air heater capacity, kW / Δt, °C	4,5/7,4
Control panel	C5.1
Maintenance space, mm	800



C5.1

Acoustic data

A-weighted sound power level L_{wA} , dB(A)
at nominal flow rate

Supply inlet	58
Supply outlet	75
Exhaust inlet	58
Exhaust outlet	75
Casing	57

A-weighted sound pressure level L_{pA} , dB(A)

10 m² normally isolated room, distance from casing – 3 m.

Surroundings	46
--------------	----

Temperature efficiency

	Winter					Summer		
Outside temperature, °C	-23	-15	-10	-5	0	25	30	35
After heat exchanger, °C	14,4	15,3	16,2	16,6	17,6	22,6	23,6	24,7

indoor +22°C, 20% RH

Changeover water/ DX heating – cooling exchanger (HCW/HCDX)

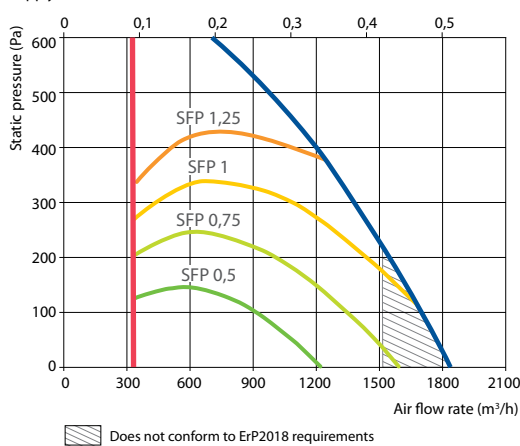
	Winter	Summer	Winter	Summer
Water temperature in/out, °C	60/40	7/12	–	–
Condensation/evaporation T, °C	–	–	45	45/5
Capacity, kW	3,9	9,8	3,7	10,0
Maximal capacity, kW	11,7	11,3	6,5	12,1
Pressure drop, kPa	2,3	67,3	–	–
Air temperature in/out, °C	14,4 / 22	30 / 18	14,4 / 22	30 / 18
Connection, " / mm		½		¾ / 22

Summer: +30°C / 50%; DX – 1450 m³/h

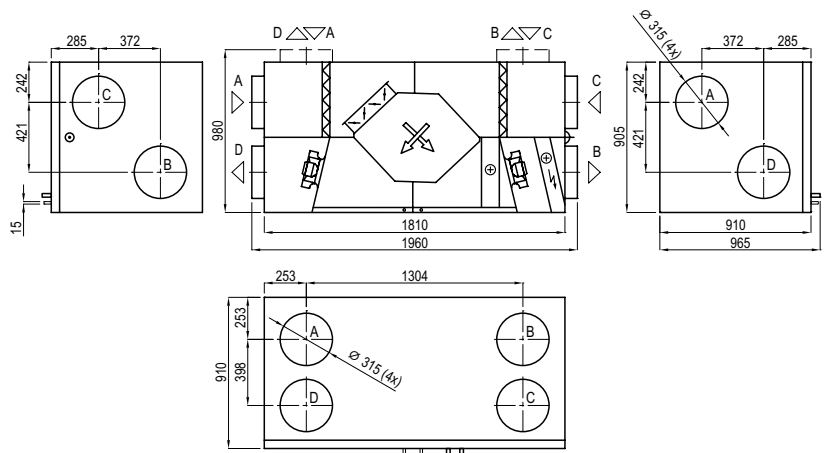
Performance

(Verso CF 1700 UH data)

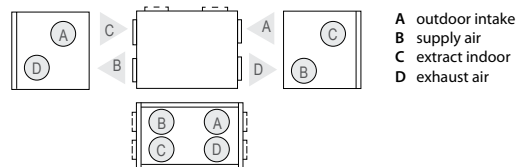
Supply air filter F7, exhaust air filter M5



Shown as right (R1)



Shown as left (L1)



- A outdoor intake
- B supply air
- C extract indoor
- D exhaust air

Accessories (p. 123)

Closing damper	AGUJ-M-315+LF24/LM24
Silencer	A/D AGS-315-100-900-M
	B/C AGS-315-100-1200-M
PPU	PPU-HW-3R-15-1,6-W2
Water cooler	DCW-1,6-11
2-way valve	VVP47.20-4,0+SSP61
DX cooler	DCF-1,6-11
Cooling unit	MOU-36HFN8+KA8243