

Verso CF 2300 U/H/V

Nominal air flow according to ErP 2018, m ³ /h	1990
Panel thickness, mm	50
Unit weight, kg	250
Supply voltage HE, V	3~400
Supply voltage HW, V	1~230
Maximal operating current HE, A	16,8
Maximal operating current HW, A	6,3
Filters dimensions BxHxL, mm	800x400x46
Electric power input of the fan drive at maximum flow rate, W	660
Electric air heater capacity, kW / Δt, °C	7,5/8,9
Control panel	C5.1
Maintenance space, mm	800



Acoustic data

A-weighted sound power level L_{WA} , dB(A) at nominal flow rate

Supply inlet	60
Supply outlet	78
Exhaust inlet	60
Exhaust outlet	78
Casing	57

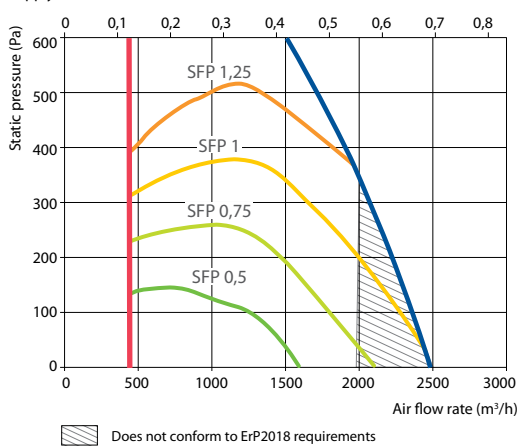
A-weighted sound pressure level L_{PA} , dB(A)

10 m² normally isolated room, distance from casing – 3 m.

Surroundings	47
--------------	----

Performance (Verso CF 2300 UH data)

Supply air filter F7, exhaust air filter M5



Accessories (p. 123)

Closing damper	H	SRU-M-300x400+LF24/LM24
	V	SRU-M-400x300+LF24/LM24
Silencer	A/D	STS-IVR3BA-600-400-700-S
	B/C	STS-IVR3BA-600-400-1250-S
PPU		PPU-HW-3R-15-1,6-W2
Air heater-cooler		DCW-2,5-17
2-way valve		VVP45.25-6,3+SSB61
DX cooler		DCF-2,5-17
Cooling unit		MOU-55HFN8+KA8243

Temperature efficiency

Outside temperature, °C	Winter					Summer		
	-23	-15	-10	-5	0	25	30	35
After heat exchanger, °C	15,7	16,2	16,5	17,2	18,0	22,5	23,4	24,4

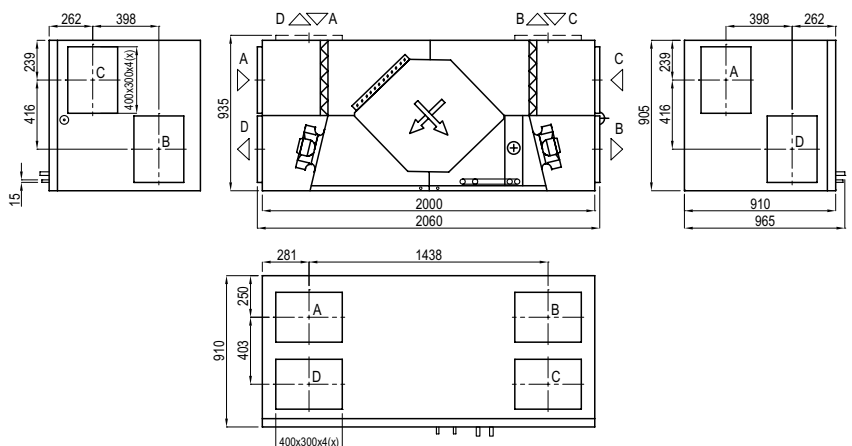
indoor +22°C, 20% RH

Changeover water/ DX heating – cooling exchanger (HCW/HCDX)

	Winter		Summer	
	Water temperature in/out, °C	Condensation/evaporation T, °C	Capacity, kW	Maximal capacity, kW
Water temperature in/out, °C	60/40	7/12	–	–
Condensation/evaporation T, °C	–	–	45	45/5
Capacity, kW	4,2	12,5	3,6	11,7
Maximal capacity, kW	13,0	12,6	6,7	13,2
Pressure drop, kPa	2	54,7	–	–
Air temperature in/out, °C	15,7 / 22	30 / 18,4	15,7 / 22	30 / 18
Connection, " / mm	¾		½ / 22	

Summer: +30°C/ 50%; HCW – 2200 m³/h; DX – 1450 m³/h

Shown as right (R1)



Shown as left (L1)

