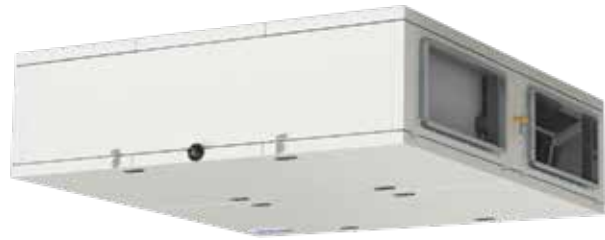


Verso CF 2500 F

Nominal air flow according to ErP 2018, m ³ /h	2590
Panel thickness, mm	50
Unit weight, kg	340
Supply voltage HE, V	3~400
Supply voltage HW, V	1~230
Maximal operating current HE, A	16,9
Maximal operating current HW, A	6,3
Filters dimensions BxHxL, mm	888x420x96
Electric power input of the fan drive at maximum flow rate, W	640
Electric air heater capacity, kW / Δt, °C	7,5/7,8
Control panel	C5.1
Maintenance space, mm	620



C5.1

Acoustic data

A-weighted sound power level L_{wa} , dB(A) at nominal flow rate

Supply inlet	64
Supply outlet	83
Exhaust inlet	64
Exhaust outlet	83
Casing	62

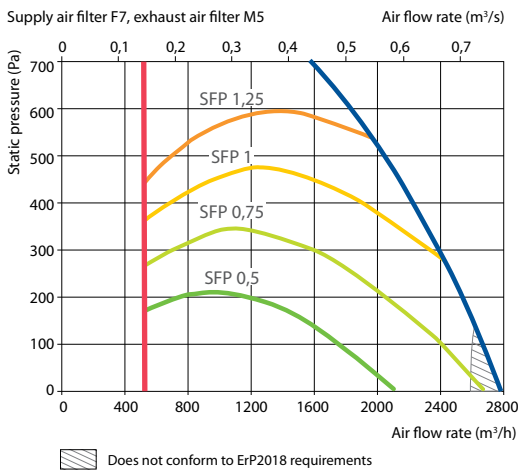
A-weighted sound pressure level L_{pa} , dB(A)

10 m² normally isolated room, distance from casing – 3 m.

Surroundings	51
--------------	----

Performance

Supply air filter F7, exhaust air filter M5



Temperature efficiency

Outside temperature, °C	Winter					Summer		
	-23	-15	-10	-5	0	25	30	35
After heat exchanger, °C	13,9	14,9	15,9	16,6	17,6	22,6	23,6	24,7

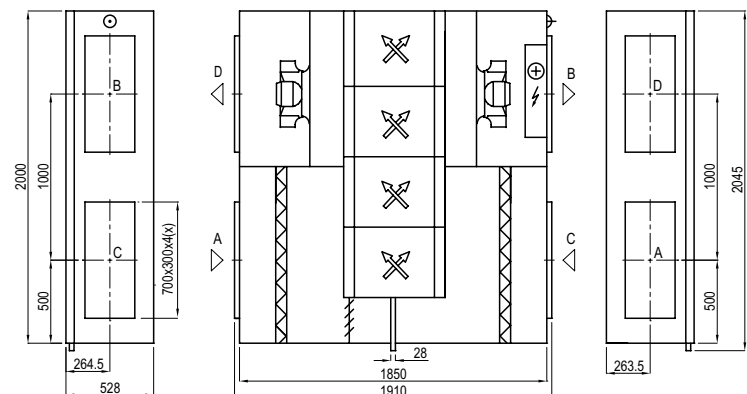
indoor +22°C, 20% RH

Hot water air heater (SVK)*

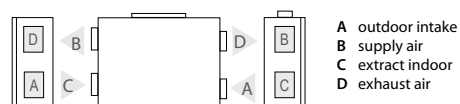
Water temperature in/out, °C	Winter		
	80/60	70/50	60/40
Capacity, kW	7,0	7,0	7,0
Flow rate, dm ³ /h	311	309	308
Pressure drop, kPa	4,8	4,8	4,9
Temperature in/out, °C	13,9 / 22		
Maximal capacity, kW	22,3	18,0	13,6
Connection, "	½		

* option

Shown as right (R1)



Shown as left (L1)



Accessories (p. 123)

Closing damper	SRU-M-700x300+LF24/LM24
Silencer	A/D STS-IVR3BA-800-300-700-S
	B/C STS-IVR3BA-800-300-1250-S
Water heater	SVK-700x400-2R
PPU	PPU-HW-3R-15-1-W2
Air heater-cooler	DCW-2,5-17
2-way valve	VVP45.25-6,3+SSB61
DX cooler	DCF-2,5-17
Cooling unit	MOU-55HFN8+KA8243