

# RHP 400 V

Nominal air flow, m <sup>3</sup> /h	398
Panel thickness, mm	30/50
Unit weight, kg	106
Supply voltage, V	1~230
Maximal operating current, A	7,7 (RHP 2.8/2.4)
Filters dimensions B×H×L, mm	462×200×46
Electric power input of the fan drive at maximum flow rate, W	103
Electric air heater capacity, kW / Δt, °C	1 / 7
Refrigerant R134 A, kg	1,1
Control panel	C5.1
Maintenance space, mm	720



### Acoustic data

A-weighted sound power level  $L_{WA}$ , dB(A)  
at reference flow rate

Supply inlet	59
Supply outlet	74
Exhaust inlet	59
Exhaust outlet	74
Casing	54

A-weighted sound pressure level  $L_{pA}$ , dB(A)

10 m<sup>2</sup> normally isolated room, distance from casing – 3 m.

Surroundings	44
--------------	----

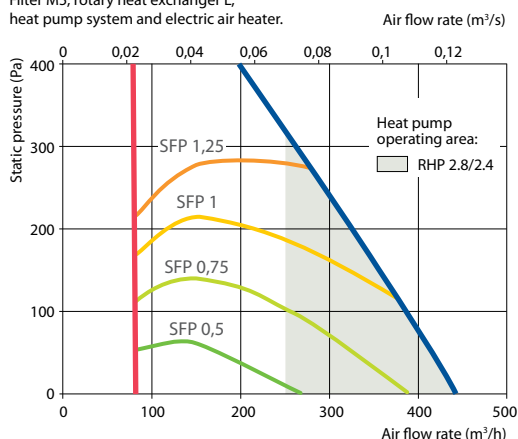
### Temperature efficiency

Outside temperature, °C	Winter					Summer		
	-23	-15	-10	-5	0	25	30	35
After heat exchanger, °C	11,2	13,2	14,4	15,5	16,7	22,7	23,9	25,1

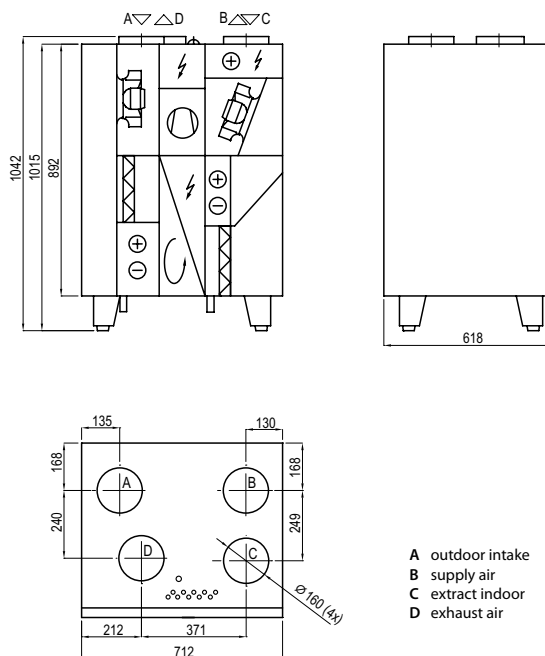
indoor +22°C, 20 % RH.

### Performance

Filter M5, rotary heat exchanger L, heat pump system and electric air heater.



Shown as right (R1)



The unit is available only right inspection side.

### Accessories (p. 123)

Closing damper	AGUJ-M-160+LF24/LM24
Silencer	A/D AGS-160-50-600-M
	B/C AGS-160-50-900-M